

# ELEVATOR BUCKETS TYPE EU

## GENERAL

Brand	Cimbria
Designation	Elevator Buckets
Model	EU
Use	Cereals and industrial purposes

Available in steel, stainless steel and plastic



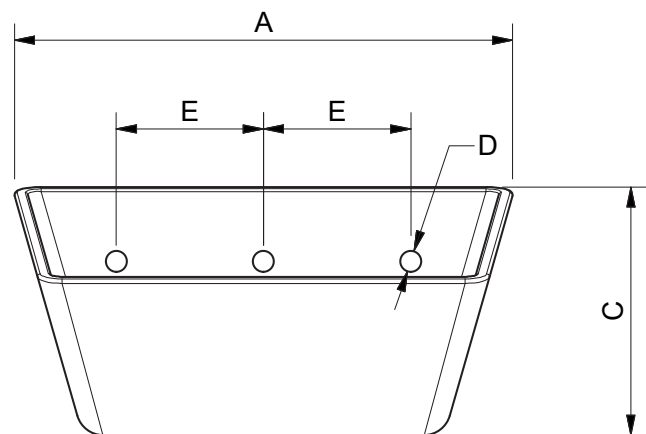
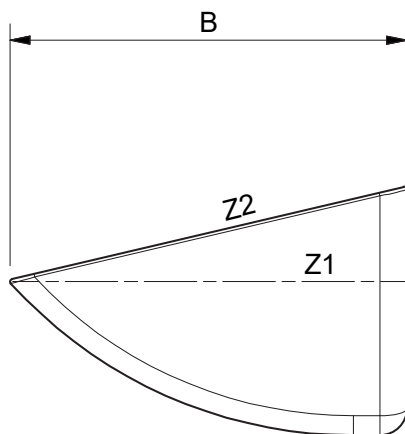
Cimbria elevator buckets type EU can be delivered in steel, stainless steel or PEHD (alternative PA6, PU).

Steel buckets are commonly used for cereals and industrial purposes. Stainless steel buckets are used in connection with corrosive environments and for product at high temperatures, and are suitable for foodstuffs.

PEHD plastic buckets are suitable for sticky products, foodstuffs and products which require gentle handling.

PEHD spacers can be fitted between the belt and the buckets to avoid material being stuck behind the buckets. This is particularly useful when transporting seeds.

Optimal bucket spacing is calculated in relation to the required throughput and determined in relation to the belt speed.



Bucket type		Elevator type	A [mm]	B [mm]	C [mm]	D [mm]	E [mm]	Min. bucket space	Capacity in litres		
Steel	Stainless								Z1	Z1 + 3°	Z2
EU051-1	EU052-1	EC-5	105	93	66	2xø8.5	50	77	0.25	0.27	0.35
EU061-1	EU062-1	EC-6	135	115	81	2xø8.5	70	90	0.50	0.54	0.68
EU081-1	EU082-1	EC-8	185	140	92	2xø8.5	100	105	0.90	0.99	1.29
EU101-2	EU102-2	ED-10	238	165	110	2xø11	120	125	1.73	1.89	2.45
EU121-1	EU122-1	ED-12	285	169	132	3xø11	80	154	2.95	3.15	3.76
EU141-1	EU142-1	EE-14	339	188	147	3xø11	110	165	4.10	4.45	5.55
EU181-1	EU182-1	EE-18	430	225	168	4xø11	100	180	7.00	7.52	9.40
EU201-1		EE-20	480	220	164	4xø11	120	190	8.50	9.08	10.53
EU241-1		EE-24	285	216	162	3xø11	80	190	4.65	4.99	5.90
EU081-1	EU082-1	EF-8	185	140	92	2xø8.5	100	105	0.90	0.99	1.29
EU101-2	EU102-2	EF-10	238	165	110	2xø11	120	125	1.73	1.89	2.45
EU121-1	EU122-1	EF-12	285	169	132	3xø11	80	154	2.95	3.15	3.76
EU141-1	EU142-1	EF-14	339	188	147	3xø11	110	165	4.10	4.45	5.55
EU205		EH-20	540	253	190	6xø11	80	200	11.00		14.60
EU146		EH-24	340	253	190	4xø11	80	200	6.70		8.95
EU206		EH-32	450	253	190	5xø11	90	200	9.15		12.10
EU205		EH-40	540	253	190	6xø11	80	200	11.00		14.60

# ELEVATOR BUCKETS

## TYPE EU

Bucket type Plastic bucket	Elevator type	A [mm]	B [mm]	C [mm]	D [mm]	E [mm]	Min. bucket space	Capacity in litres		
								Z1	Z1 + 3°	Z2
EU053-1	EC-5	110	97	69	2xø8	50	77	0.24	0.27	0.33
EU063-1	EC-6	145	122	83	2xø8	70	100	0.46	0.55	0.69
EU073-1	EC-8	160	131	85	2xø8	80	105	0.60	0.67	0.94
EU083-1	EC-8	188	149	93	2xø8	100	105	0.84	0.99	1.20
EU103-1	ED-10	228	152	112	2xø8.5	120	125	1.49	1.68	1.93
EU123-1	ED-12	292	170	116	3xø11	80	125	2.00	2.31	2.90
EU143-1	EE-14	318	186	135	3xø11	100	143	2.97	3.38	4.04
EU183-1	EE-18	420	228	168	4xø11	100	190	7.10		
EU203-1	EE-20	460	228	168	5xø11	90	190	7.80		
	EE-24									
EU083-1	EF-8	188	149	93	2xø8	100	105	0.84	0.99	1.20
EU103-1	EF-10	228	152	112	2xø8.5	120	125	1.49	1.68	1.93
EU123-1	EF-12	292	170	116	3xø11	80	125	2.00	2.31	2.90
EU143-1	EF-14	318	186	135	3xø11	100	143	2.97	3.38	4.04
EU204-1	EH-20	520	228	168	5xø11	100	200	9.00		11.70
EU143-4	EH-24	350	228	168	3xø11	120	200	5.80		7.60
EU203-1	EH-32	460	228	168	5xø11	90	200	7.80		10.30
EU143-4	EH-40	350	228	168	3xø11	120	200	5.80		7.60